

start and end on long
ABDEG cluster chord



single notes



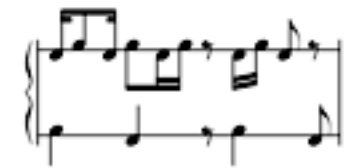
John Webber

TIERS OF ABDEG

Starting with the box move horizontally or vertically to any adjacent note.

C	D	E	G	A	B	C#	Eb	F	Ab	Bb	F#
Bb	C	D	F	G	A	B	C#	Eb	F#	Ab	E
Ab	Bb	C	Eb	F	G	A	B	C#	E	F#	D
F#	Ab	Bb	C#	Eb	F	G	A	B	D	E	C
E	F#	Ab	B	C#	Eb	F	G	A	C	D	Bb
D	E	F#	A	B	C#	Eb	F	G	Bb	C	Ab
C	D	E	G	A	B	C#	Eb	F	Ab	Bb	F#
Bb	C	D	F	G	A	B	C#	Eb	F#	Ab	E
Ab	Bb	C	Eb	F	G	A	B	C#	E	F#	D
F#	Ab	Bb	C#	E	F	G	A	B	D	E	C
E	F#	Ab	B	D	Eb	F	G	A	C	D	Bb
D	E	F#	A	C	C#	Eb	F	G	Bb	C	Ab

two notes



three notes



free improvisation



five notes



four notes

with thanks to Jack and the PNMO/COMA Ensemble